

Installation of Bipotentiostat and multichannel potentiostat (FOR MODEL CS2350 / CS2150 /CS310X, etc)

The installation process is the same for bipotentiostat and multichannel potentiostat

1. Software installation

(1) Use the Ethernet cable to connect the computer with the instrument. Power on the instrument.

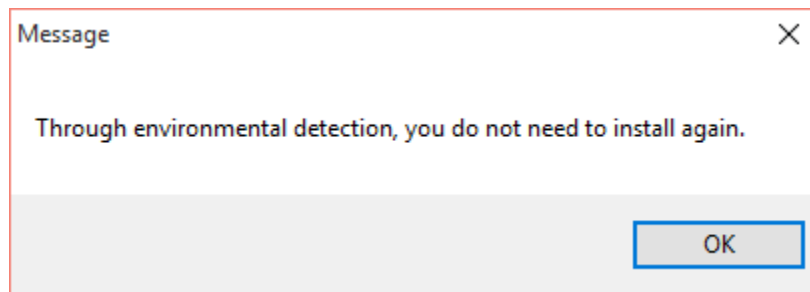
(2) Open the “software installation” folder, right click the “ CS Studio setup.exe”, and run as administrator.

CS Studio6 Software installation	2022/9/13 9:22	文件夹	
CSSStudio6 SDK(.dll)	2022/9/13 9:22	文件夹	
SoConfigTool	2022/9/13 9:22	文件夹	
Training videos	2022/9/13 13:30	文件夹	
CS Studio6	2022/9/13 9:21	文件夹	
DotNetFX35	2022/9/13 9:22	文件夹	
Drivers	2022/9/13 9:22	文件夹	
cs studio	2021/8/27 17:15	安装信息	1 KB
CS Studio6 setup	2021/8/27 17:15	应用程序	3,995 KB



(3) For potentiostat more than one channel, we use Ethernet communication. So there is no need to install drivers. Firstly, install the .net 3.5. If your computer has already

installed it, there will be a prompt as follows.



If it has not installed in your computer, just follow the steps to finish installation of .net 3.5.

(4) Click install CS Studio5. Created a shortcut is on the desktop.

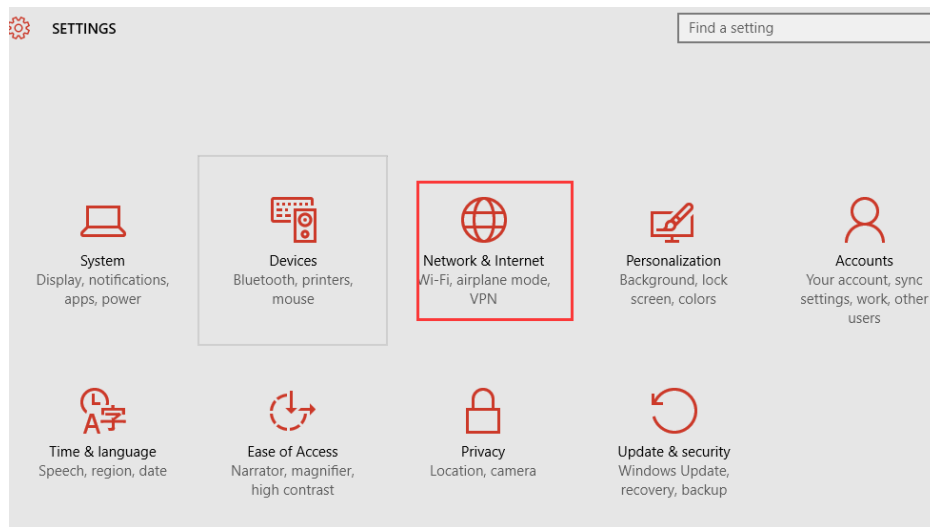


2. IP address configuration (Windows 10 operation system as an example)

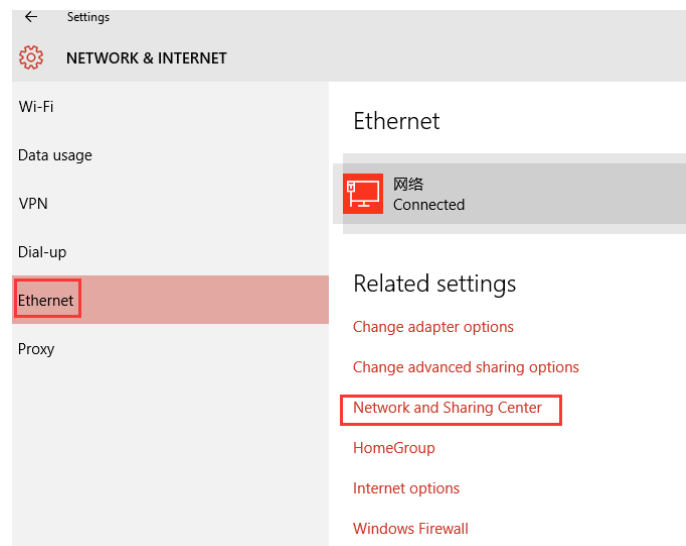
Connecting the instrument(Bipotentiostat or multichannel potentiostat) with computer by Ethernet cable, you should reset the IP address of the computer.



(1) Find the “Network and sharing centre”

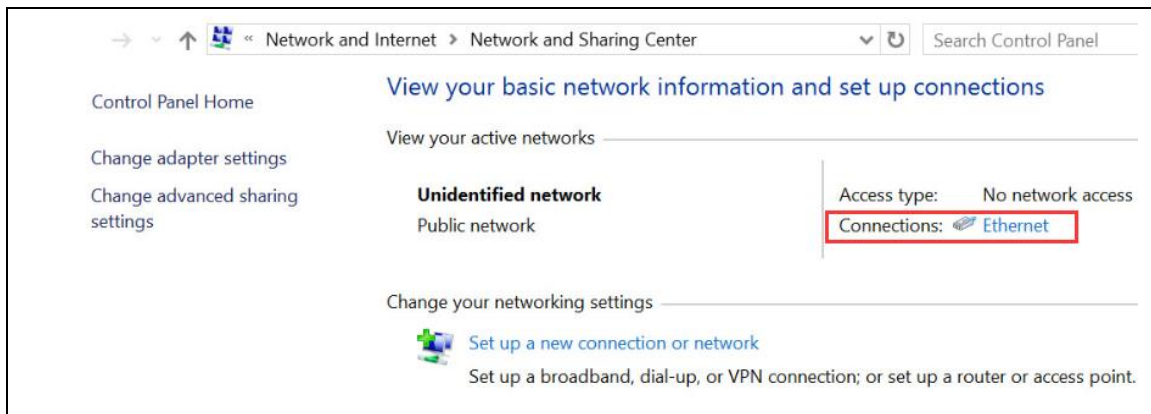


Then, Ethernet → Network and sharing center

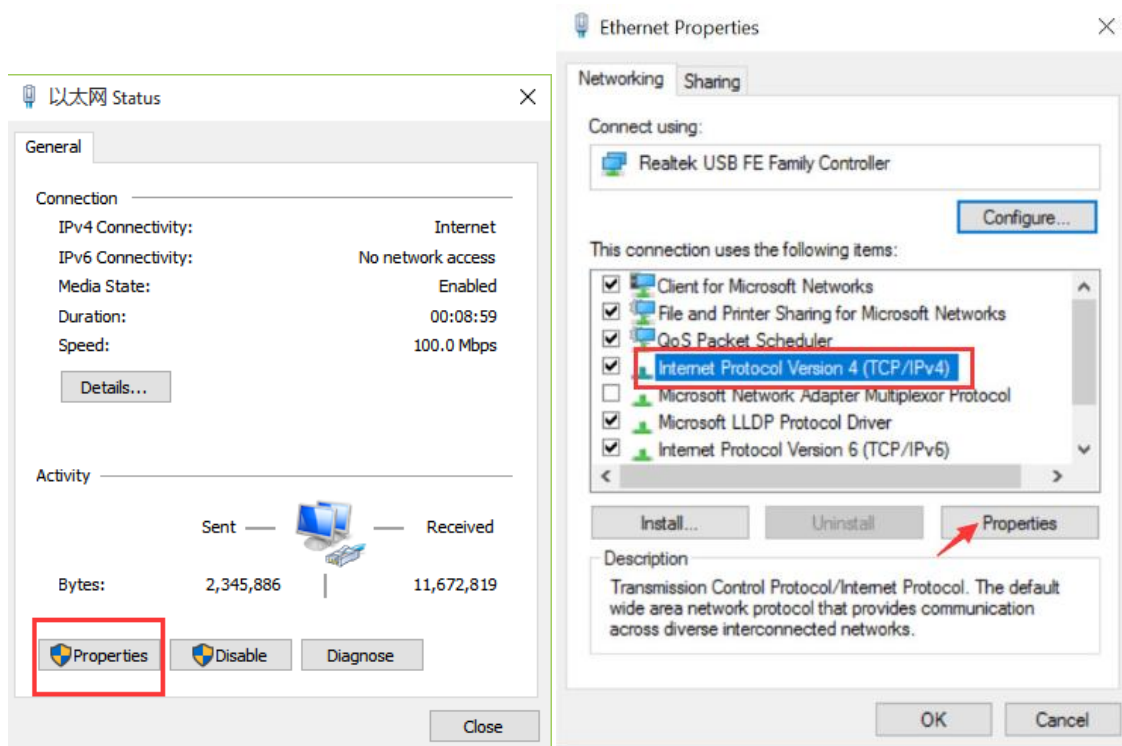


(Or  → Network and sharing center)

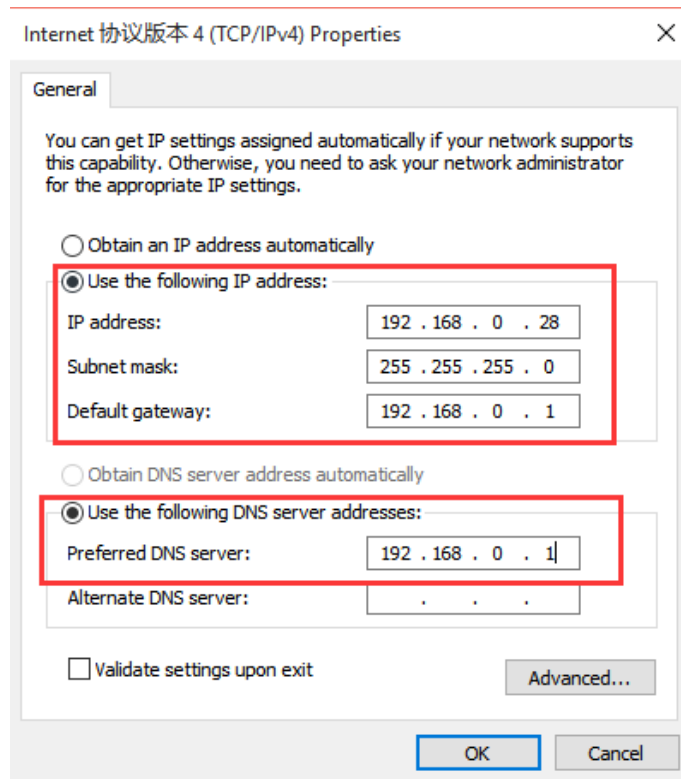
(2) Click “Ethernet” shown as below:



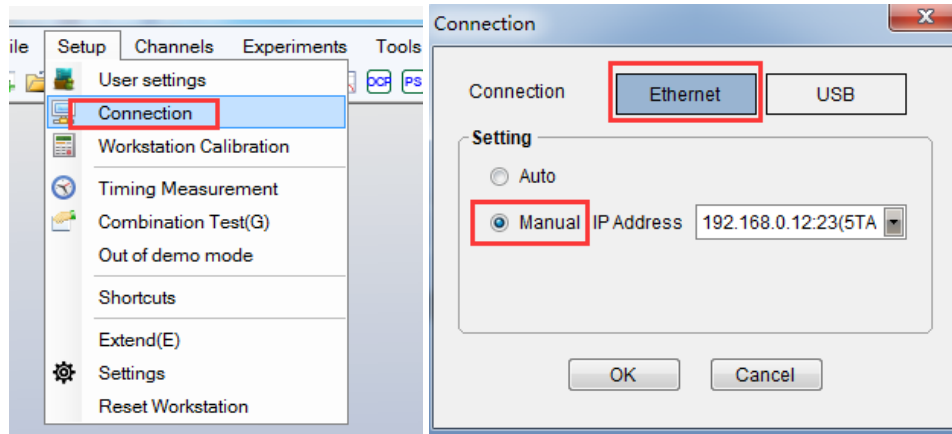
(3) Click “Properties”, then check “Internet Protocol version 4(TCP/IPv4)”



(4) Fill in the IP address exactly as below:



(5) Open CS Studio5 software, “Setup” → Connection→ “Ethernet” →Manual



(6) When the bipotentiostat CS2350 is successfully connected with the computer, there will be model and serial number shown on the software interface, as is shown below.

